



# RMRFuel Fuel Consumption Monitor

(for iOS and Android phones)

## User Guide



© RMR Software 2011

All rights reserved

**Note:** This program will always check to see if an update is available. If there is one it will automatically download the new version and restart. This may take up to 20 seconds, so be patient. If the programs seems to hang during starting then the upgrade is probably running in the background. So just count to 10 and try again.

## Contents

Contents .....	1
RMRFuel.....	1
Program Installation .....	2
Program Setup .....	2
Currencies .....	3
Vehicles.....	4
Fuel Screen .....	4
Add fuel purchases .....	5
Consumption Graph .....	6
Fuel usage statistics.....	6
Notepad.....	6
Reminder screen .....	7
Add reminders.....	7
Expenses screen .....	8
Add expenses.....	8
Additional functions .....	9
Backup and Restore .....	9

## RMRFuel

**RMRFuel 'Fuel Consumption Monitor'** allows you to track the fuel consumption of up to 10 vehicles. It maintains a record of the Amount Paid, Price per Gallon/Litre, Distance covered and the Fuel Consumption.



The program is fully configurable for all international measures, allowing entry and/or display in miles/kilometers and litres/gallons(UK or US).

For each vehicle there are 3 screens:

### **Fuel screen**

- Used for entering and viewing the current and historical values of fuel purchases and consumption.
- Has an associated Graph screen for viewing the data graphically.
- Has an associated Statistics screen

### **Reminder screen**

- Used for entering date and distance alarms for things such as safety checks and scheduled servicing..

### **Expenses screen**

- Used for recording other running costs.

You can switch between the screens using the Blue tabs on the TitleBar at the top of the screen or if you have a touch screen then swiping horizontally.

## **Program Installation**

### **iPhone**

- Open Safari and enter the URL <http://www.rmrsoft.com/RMRFuel>
- Tap the centre button at the bottom of the screen (Square with outgoing arrow)
- Select **Add to Home Screen**
- Name the link (RMRFuel unless you want anything different)

From now on you can run the program from your Home Screen by tapping on the Icon even when not connected to the Internet.

### **Android**

- Open the Browser and enter the URL <http://www.rmrsoft.com/RMRFuel>
- Tap the Menu button (furthest left) and select **More** and then the **Add bookmark** option
- Name the bookmark (RMRFuel unless you want anything different)
- Go back to the main screen and tap the Menu button again and this time select **Bookmarks**
- Do a long tap on the Bookmark until the sub-menu pops up
- Select **Add shortcut to Home Screen**
- From now on you can run the program from your Home Screen by tapping on the Icon even when not connected to the Internet.

### **Chrome on Mac/PC**

- Open the Browser and enter the URL <http://www.rmrsoft.com/RMRFuel>
- Save it as a Boomark.

## **Program Setup**

When you start the program for the first time you will find a sample vehicle that uses US\$, US Gallons and mile. You can use this to try out all the aspects of the

Date	Cost	Distance	Fuel
06/10/10	£ 60.34	102,091	29.6
07/10/10	£ 70.69	102,580	34.7
11/10/10	£ 57.98	102,938	31.3
12/10/10	£ 72.44	103,342	30.5
15/10/10	£ 63.31	103,713	33.9
16/10/10	£ 68.31	104,098	34.3
19/10/10	£ 61.13	104,467	32.2
10/12/10	£ 71.94	104,816	25.9
28/12/10	£ 73.26	105,179	26.9



program. Probably the first thing you should do is change all the configurable items to your requirements.

### Tools > Program settings

**Default to Full Tank** Although you have to fill up the tank to get an accurate consumption reading, you will often just do a partial fill. If this happens regularly you may wish to set the Default setting to OFF.

**Scroll entries** When you have more entries than the screen can display, the **Start/Prev/Next/End** buttons at the top of the screen will activate. This option allows you to specify how many rows to scroll when you tap the **Prev** or **Next** buttons.

**Date Format** Self explanatory

### Tools > Display settings

**Decimal Places** Here you can specify the decimal places for each of the values displayed on the screen.

**Second Column** This can be set to Cost, Amount or Price as the default. Although once in the screen you can also switch the column display by tapping on the header.

After this you can experiment with the program with some test data until the next time you fill up the car. At that point you can go to:

**Edit > Vehicles > Edit Vehicle** to change all the details for your vehicle

**Name** Title of the vehicle

**Odometer** The odometer reading is for the first fill up, which will act as the baseline for all future entries.

**Currency** Default input Currency (The program will allow entry in any defined currency)

**Volume Units** The units used when filling the vehicle.

**Distance Units** Self-explanatory.

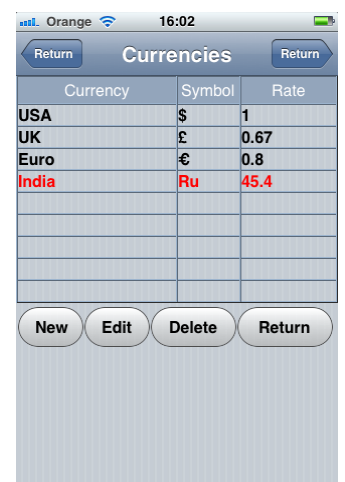
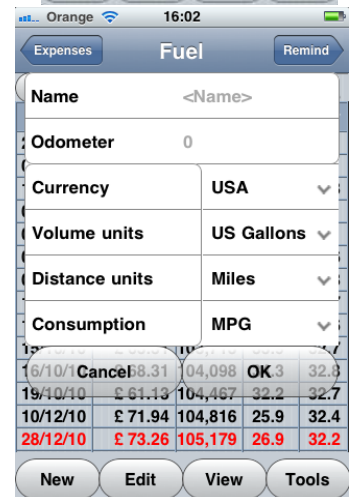
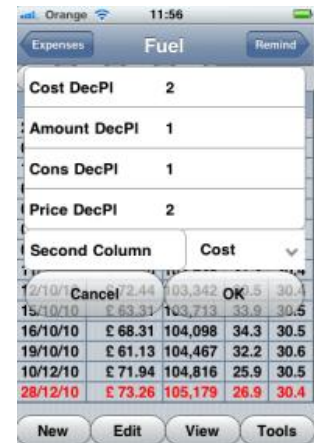
**Consumption** The units you wish to see displayed on the screen.

## Currencies

Each vehicle in the program is allocated a Primary Currency, and in addition the program allows you to input in other currencies for temporary use when adding entries e.g. while on holiday. The costs will be converted to your primary currency at the rates you define.

### To add a currency

- Use **Edit > Currencies** and the New button.
  - Define a name, symbol and the exchange rate to your primary currency.





### To update an exchange rate

- Use **Edit > Currencies** and the Edit button.
  - Select the currency, and change the rate to the current exchange rate.

### To delete a currency

- Use **Edit > Currencies**
- Select the currency, and use the Delete button.

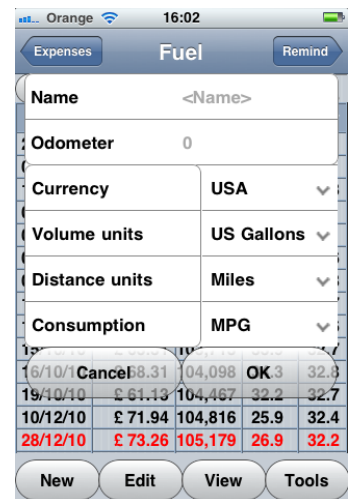
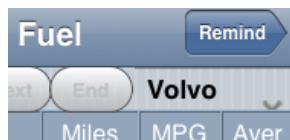


## Vehicles

You can maintain records for up to 10 vehicles.

- Tap **Edit > Vehicles > Add vehicle** to create vehicle files. Enter the name and as described earlier the odometer reading at the last full tank. Also input the currency, input and distance units you want to use.
- Tap **Edit > Vehicles > Edit vehicle** to amend any of the vehicle details.
- Tap **Edit > Vehicles > Delete** vehicle to remove vehicle files if you no longer have the vehicle or need to keep records.

You can then switch between vehicles using the dropdown selector at top right of the Fuel, Remind and Expenses screens.



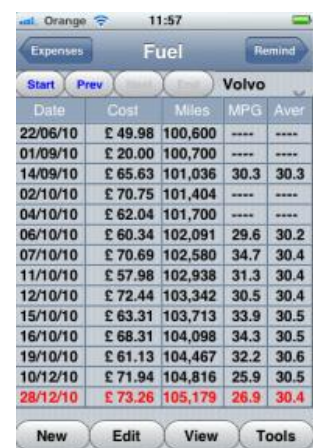
## Fuel Screen

The Fuel screen is where you add the details of new fuel purchases and shows a cumulative record of all past entries with consumption rates.

Two consumption values are shown; the spot consumption since the last fill is on the left; the running average consumption on the right.

Note that tapping on the column heading titles allows you to cycle round the selections for the second columns between cost, price, and amount of fuel

By default, the screen displays the last 14 entries. You can page through the previous entries using the **Start**, **Previous**, **Next** & **End** buttons or if you have a touch screen by swiping vertically.





Date	Cost	Miles	MPG	Aver
07/10/10	£ 70.69	102,580	34.7	30.4
11/10/10	£ 57.98	102,938	31.3	30.4
12/10/10	£ 72.44	103,342	30.5	30.4
15/10/10	£ 63.31	103,713	33.9	30.5
16/10/10	£ 68.31	104,098	34.3	30.5
19/10/10	£ 61.13	104,467	32.2	30.6
10/12/10	£ 71.94	104,816	25.9	30.5
28/12/10	£ 73.26	105,179	26.9	30.4

## Add fuel purchases

Each time you fill your vehicle with fuel, tap on New and enter details of your fuel purchase:

- **Full Tank** Whether or not tank is filled
- **Date** Self explanatory
- **Cost** The total amount paid, and the associated currency
- **Amount** The quantity of fuel and the associated units.
- **Distance** The odometer reading and the associated units.

Note that we keep referring to a 'full tank' as it is preferable that every entry is based on the same baseline. If you only add a part tank each time then the calculations will be all over the place. You can obviously use some other baseline provided you are consistent, but the full tank seems to be the logical one.

- Use **Edit > Edit entry** if you need to correct the details of any entries.
- Use **Edit > Delete entry** if you need to remove an entry.

Full tank

Date 22/01/11

Cost 0 UK

Amount 0 Litres

Distance 37000 Miles

Cancel OK

New Edit View Tools



### Consumption Graph

Once a few entries have been recorded, use **View > Graph** to show a graphical panel of the fuel consumption history for the vehicle.



The screenshot shows the 'Statistics' screen with a green background. It lists the following statistics:

- Total distance: 9,279 miles
- Total fuel: 1,349.0 litres
- Total cost: £ 2,396.00
- Total fuel cost: £ 1,596.00
- Total oil: £ 0.00
- Total servicing: £ 800.00
- Total cost/mile: £ 0.26

Below the statistics is a table of fuel entries for the year 2010:

Date	Cost	Miles	MPG	Aver
15/10/10	£ 63.31	103,713	33.9	30.5
16/10/10	£ 68.31	104,098	34.3	30.5
19/10/10	£ 61.13	104,467	32.2	30.6
10/12/10	£ 71.94	104,816	25.9	30.5
28/12/10	£ 73.26	105,179	26.9	30.4

### Fuel usage statistics

Tapping View > Statistics will show a range of details summarizing your overall fuel usage, distances travelled, and vehicle running costs.

### Notepad

Tapping View > Notepad will produce a small memopad where you keep details about the vehicle such as tax and insurance details, service history, or contact numbers.

The screenshot shows the 'Notepad' screen with a text input field containing the placeholder text 'Enter text here'. Below the input field is an 'OK' button. At the bottom of the screen are buttons for 'New', 'Edit', 'View', and 'Tools'.

can







## Additional functions

### Register Program

Use **Tools > Register program** to enter your personal registration code to allow full use of the program without data restrictions. This function is also available from the opening 'nag' screen. This code is obtainable by registering from our Home screen at <http://www.rmrsoft.com>

### About

Use **Tools > About** to obtain contact details for RMR Software and information about the program.

## Backup and Restore

As previous users of my programs on other platforms will know I have always built in a Backup/Restore system as it is inevitable that at some time a problem would occur.

Unfortunately I have been unable to do that with this version as the systems I use do not allow it. In particular Apple has designed iOS so that a program is not allowed to do anything outside of its own environment so I cannot backup or export the database to another area.

However, the situation is even worse with Chrome and Android. At least in iOS, when you Clear the Cache, the stored databases are not deleted. In Chrome and Android (as far as I know), the databases are cleared as well.

So I suggest the following:

**iOS** To backup the databases, go to iTunes and right-click on the Phone in the left column and perform a Backup. Same applies to a Restore.

**Chrome** The databases are stored in C:\Users\..yourname..\AppData\Local\Google\Chrome\User Data\Default\databases\file\_\_0\ (That is for Vista/Win7), I have no idea on the Mac. So you can go into that folder and make periodic copies.

**Android** At this stage I have no idea. Hopefully someone can come up with an answer before long.